

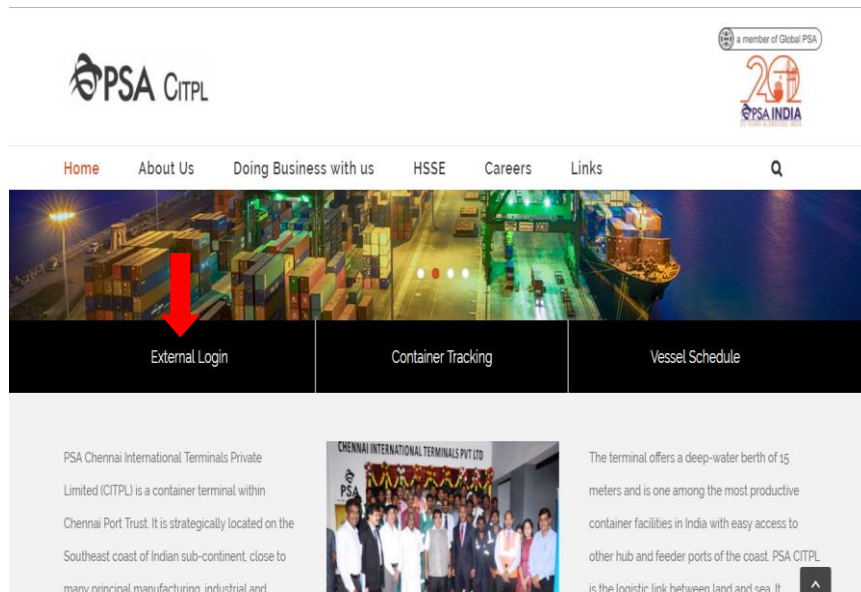
USER MANUAL FOR EXTERNAL USER - SYSTEM CONFIGURATION SETUP

1. The New TOS Application will support **Chrome, Firefox, IE 9** and above browsers.

2. If you are using **Internet Explorer** Please follow the page 2

3. Open Google chrome browser go to tos.citpl.co.in/HDCITPL

4. Now you can open the www.citpl.co.in website



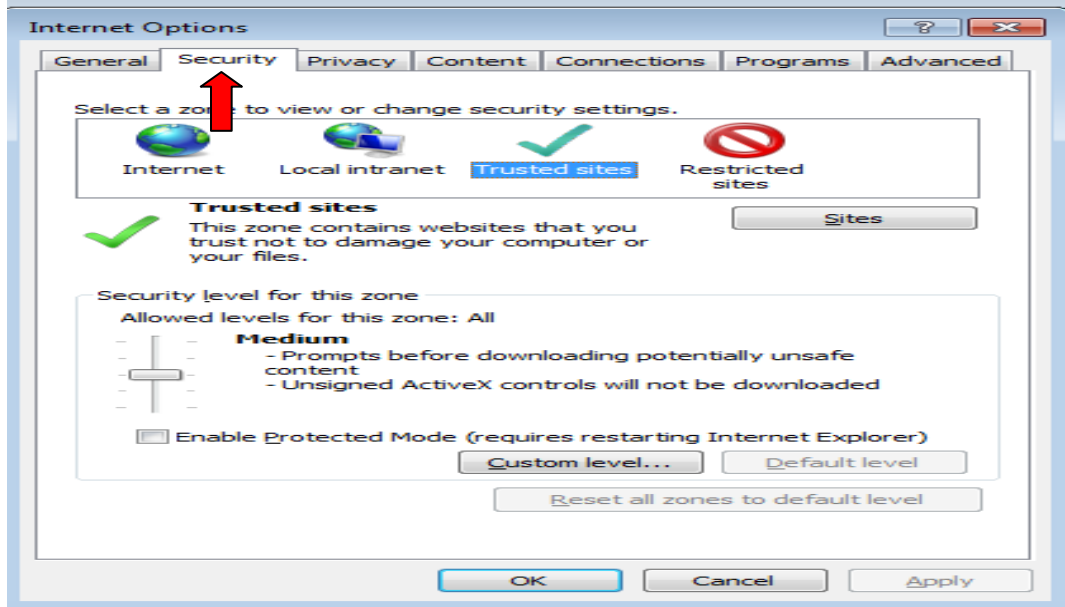
5. Then click the **“External Login”**



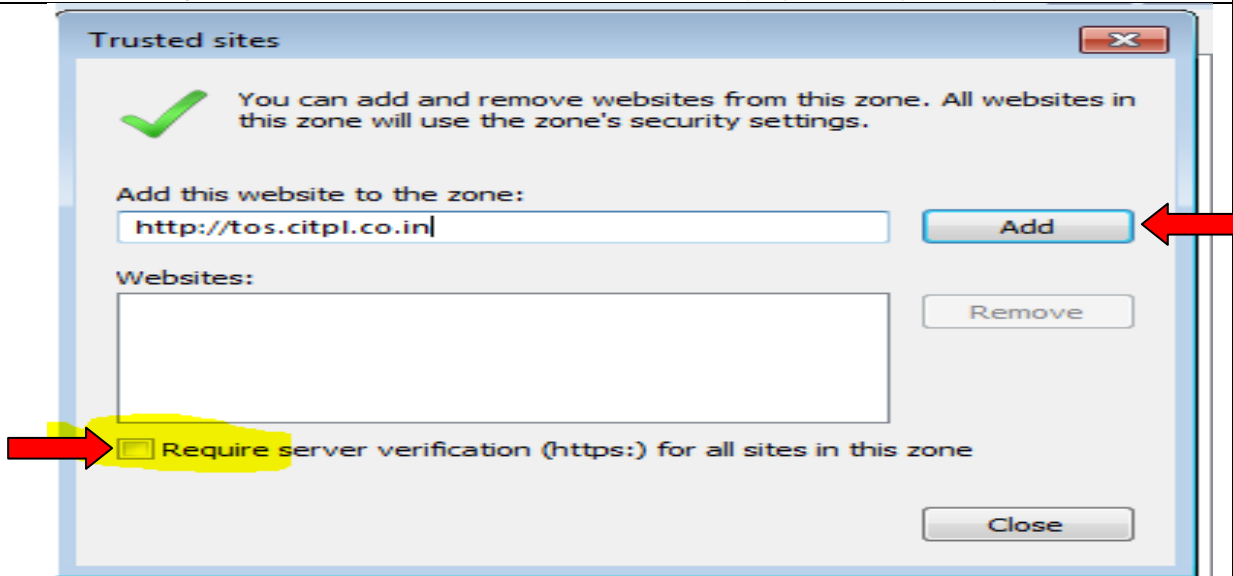
6. Use your **Login credentials**.

7. The New TOS Application will support **Chrome, Firefox, Internet Explorer (IE) 9** and above browsers.

8. If you are using **Internet Explorer**, then Click Tools Internet options



9. Select Security and click Sites and Add the selected site (<http://tos.citpl.co.in>).



Note: Uncheck Require server Verification ([https:](https://)) for all sites in this zone